



The various kinds of ventilating fans manufactured by our plant are novel in design, low in noise, fine in insulation safe and durable in use. They are suitable for use in factory, hotel, greenhouse, warehouse, drying cabinet, home and kinds of sites for Ventilating air.

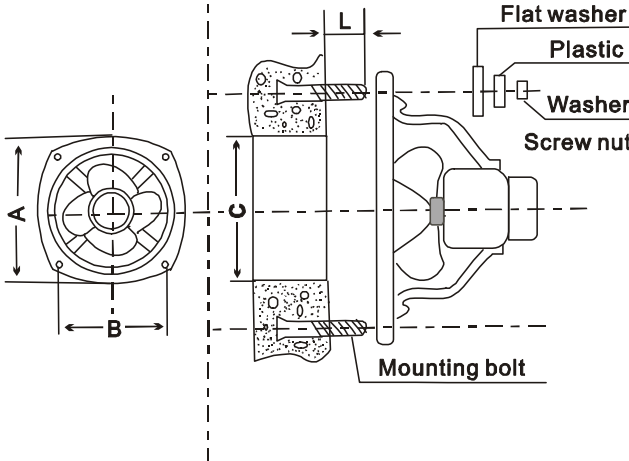
**Specification**

**I**  
TABLE1

Type	Size (mm)	Voltage (V)	Frequency (Hz)	Air Delivery (m³/min)	Speed (r/min)	Power(+/-10%) (w)
open	230	230	50	13	1400	50
	300	230	50	32	1400	130
	400	230	50	68	1400	220
	450	230	50	100	1400	380
	600	230	50	115	950	380
type – FAC	300	380/420	50	32	1400	130
	400	380/420	50	68	1400	200
	450	380/420	50	100	1400	380
	600	380/420	50	115	950	380
	600	380/420	50	150	1400	700
	750	380/420	50	270	1400	1100

**II Overall Dimension and Weight** TABLE2

Size	A	B	Hole Numbers×Diameter
230	296×296	235×235	4×Φ9
300	386×386	308×308	4×Φ9
400	480×480	380×380	4×Φ9
450	556×556	432×432	4×Φ11
600	720×720	570×570	4×Φ13
750	890×890	708×708	4×Φ18

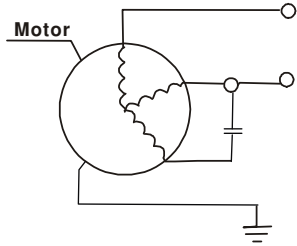


**III Installation** TABLE3

Size	Holes	Bolt	L
230	Φ236	4-M8	≥25
300	Φ326	4-M8	≥25
400	Φ416	4-M8	≥25
450	Φ476	4-M10	≥30
600	Φ620	4-M12	≥30
750	Φ780	4-M18	≥30

**Instruction**

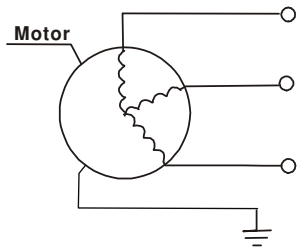
1. Prepare or make holes for installation in the built ding or wall, and embed the bolt into the hole, Refer to the size listed in TABLE 3.
2. Employ the standard plug when the out let is used, If the power of the fan is connected directly to the supplying power circuit, a Switch should be fixed in the circuit.
3. For the power wires, the yellow and green one is ground weir, and should be well ground.
4. When mounted on the outer wall where the device is liable to be splashed with a proactive mask, so as tappet the room from rain and reduce the backpressure of wind out door.
5. When setting the three-phased fan, please pay attention to the turning do reaction.



Wiring diagram (230V)

**Conditions for Operation**

1. The elevation cannot exceed 1000metres.
2. The ambient relative humidity can not exceed90%(tem perturb is+25°C)
3. The ambient temperature cannot exceed+40°C.
4. Ventilating fans must be installed at height of more than 2.3metres above the ground.
5. Don't use the ventilating fan in the environments with acid or epilogues.
6. Use the fans limited indoor sidewall and on ceilings.



Wiring diagram (380V)

**Use and Maintenance**

1. Check the voltage and frequency, the voltage and frequency indicated on nameplate shall be incompliance with local supply voltage and frequency. Otherwise the fan will be damaged.
2. Check the fan blades to make clear if there are no tostadas and hind. Erring phenomenon before operation.
3. The yellow and green wires the ground wire and should be ground firmly.
4. Don't bump and press the fan blades and don't freely change the angle of them.
5. Having used for a long time renew the grease in the bearings. At regular intervals, clear the dirt stain by means of a wet soft cloth with a little soap water, then wipe it dry with another dry cloth.